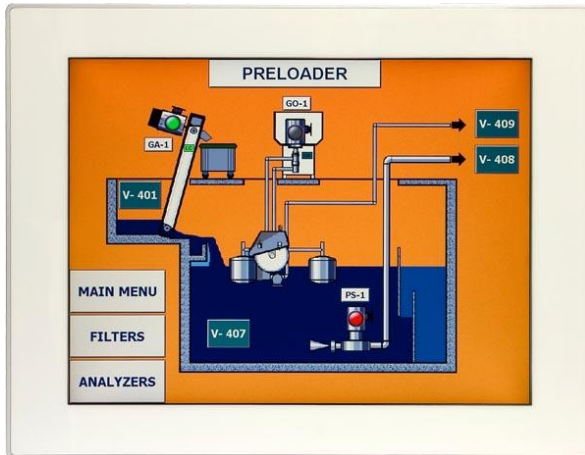


UniOP eTOP315

The UniOP eTOP Series 300 combines state-of-the-art features and performance with an outstanding design. They are the ideal choice for HMI applications including factory and building automation. The eTOP315 features a bright 15" TFT display with full vector graphic capabilities. This is the ideal product for high-end HMI applications. Connections include Ethernet and USB.



- 15" TFT color display, LED backlight
- 1024x768 pixel (XVGA) resolution, 64K colors
- Advanced vector graphics
- Resistive touchscreen
- 64 MB user memory
- 10/100 Ethernet interface
- USB interface
- Connection to bus systems using optional plug-in modules
- Slim design. Mounting depth less than 50mm

Highlights

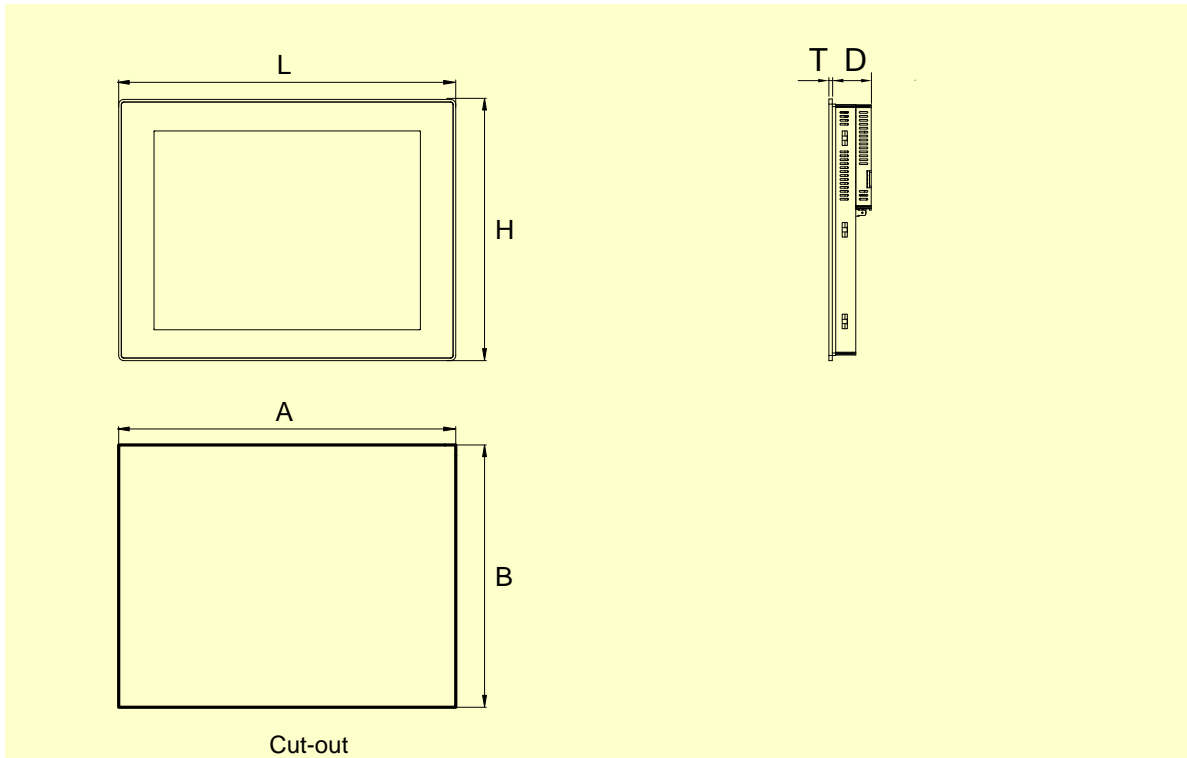
The eTOP Series 300 HMI panels are fully compatible with UniOP Designer 6 software.

- Powerful and intuitive programming with the UniOP Designer 6 software.
- Supports more than 150 communication drivers.
- Built-in Ethernet port for communication with devices, programming the HMI from Designer and retrieving data from computers.
- USB host port for the connection of flash drives. Flash drives can be used for upgrading applications and firmware.
- Optional plug-in modules for fieldbus systems and networks. Compatible with TCM and SCM modules.
- Dual-driver communication capability.
- Vector graphic capabilities including the support of multiple layers and object transparency.
- Data display in numerical, text, bargraph, analog gauges and graphic image formats. Dynamic object properties supported.
- Data acquisition and trend presentation. Trend data can be transferred to a host computer using the Ethernet connection.
- Recipe data storage. Recipe data can be transferred to a host computer using the Ethernet connection or copied to flash drives via USB connection.
- Multilanguage applications. Far East languages are supported. The number of runtime languages is limited only by the available memory. All text information in the application can be exported to files in Unicode format for easier translation.
- Powerful macro editor to configure touchscreen operation
- Alarms and historical alarm list. Alarm and event information can be printed or transferred to a host computer.
- Eight level password protection.
- Report printing to serial printer. Reports are freely configurable using Designer.
- Ethernet-based UniNet network to share data between UniOP HMIs and to serve data using UniNet OPC Server.

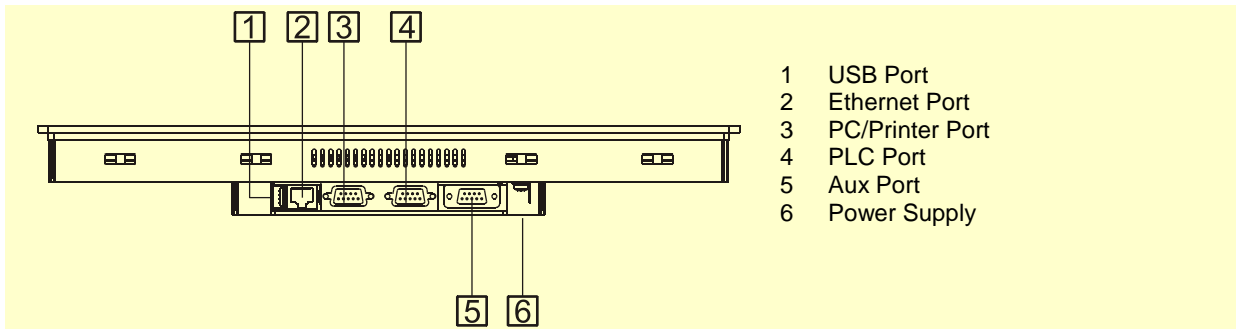
Technical Data

| | | | |
|-----------------------------|--|---------------------------------|---|
| Display | | Password | Yes |
| Type | TFT | Hardware Real Time Clock | Yes, with battery back-up |
| Resolution | 1024x768, XVGA | Screen saver | Yes |
| Active display area | 15" diagonal | Buzzer | Yes, audible feedback for touchscreen |
| Colors | 64K | Ratings | |
| Backlight | LED | Power supply voltage | 24 Vdc (18 to 30 Vdc) |
| Brightness | 250 Cd/m ² typ. | Current consumption | 1.1 A at 24 Vdc(max.) |
| Dimming | Yes | Fuse | Automatic |
| Memory | | Weight | Approx 3.4 Kg |
| User memory | 64 MB internal Flash | Battery | Rechargeable Lithium battery, not user-replaceable |
| Front panel | | Environmental Conditions | |
| Touchscreen | Analog resistive | Operating temperature | 0 to 50 °C |
| User LED indicators | 1 | Storage temperature | -20 to +70 °C |
| System LED indicators | 4 | Operating and storage humidity | 5 – 85 % relative humidity, non-condensing |
| Interfaces | | Protection class | IP65 (front panel) IP20 (rear) |
| Ethernet port | 10/100 Mbit | Dimensions | |
| USB port | Host interface, version 1.1 | Faceplate LxH | 392x307 mm |
| PC/Printer port | RS-232, RS-485, RS-422, software configurable | Cutout AxB | 381x296 mm |
| PLC port | RS-232, RS-485, RS-422, software configurable | Depth D+T | 46mm+5mm |
| Aux port | Yes, fieldbus and controller modules | Approvals | |
| Functionality | | CE | Emission EN 61000-6-4 Immunity EN 61000-6-2 for installation in industrial environments |
| Vector graphics | Yes | UL | UL508 Listed Haz. Loc. Class I, Division 2, Groups A,B,C and D. |
| Object dynamics (hide/show) | Yes | | |
| TrueType fonts | Yes | | |
| Dual driver capability | Yes | | |
| Video input | No | | |
| Data acquisition and trends | Yes | | |
| Multilanguage | Yes, number of run-time languages limited only by available memory | | |
| Recipe memory | Yes. Flash memory storage limited only by available memory | | |
| UniNet network | Client/Server | | |
| Alarms | 1024 | | |
| Event list | 1024 | | |

Dimensions



Connections



Ordering Information

| Model | Part Number | Description |
|---------|-------------|---|
| eTOP315 | ETOP315U101 | 15" TFT color touchscreen with Ethernet and USB interfaces. White front panel. |
| | ETOP315U201 | 15" TFT color touchscreen with Ethernet and USB interfaces. Silver front panel. |
| | ETOP315U301 | 15" TFT color touchscreen with Ethernet and USB interfaces. Black front panel. |
| PROT-16 | | Disposable protection foil for 15" eTOP touch panels (10 pieces). |
| PROT-22 | | Disposable protection foil for 15" eTOP touch panels (10 pieces). UV resistant. |

ptn0323

Ver. 1.6

Copyright © 2011-2015 Exor International S.p.A. – Verona, Italy

Subject to change without notice

The information contained in this document is provided for informational purposes only. While efforts were made to verify the accuracy of the information contained in this documentation, it is provided "as is" without warranty of any kind.

www.exorint.net

ptn0323-6.doc - 4.06.2015

UniOP eTOP315